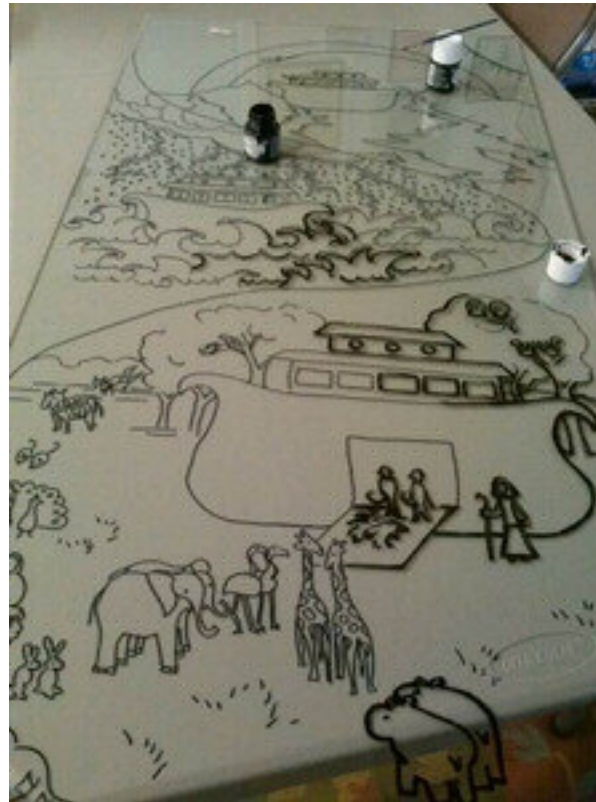


Perhaps you have wondered just how an artist makes the transition from a mere thought to a finished work of art. Recently Eileen sat down with a couple of friends and explained how she creates her art work from the very first inspiration to the colorful depiction of Noah's Ark we are seeing today in our sanctuary.

Eileen explained that she had seen the famous artist Marc Chagall's beautiful stained glass window while visiting the Chicago Art Institute a few years ago. She was inspired by the vibrant colors and interesting design of this artist. With this work in the back of her mind, she presented the idea of painting on glass to the church decorating committee.

With the go ahead from the Pastor, the committee brainstormed well-known and favorite Bible stories. Noah's Ark was chosen and Eileen began to create a design using this well-loved story. A few sketches later, Eileen had her general plan. She knew she wanted to have the painting in three parts, all in a curvilinear composition. There would be the animals, two by two boarding the ark, the forty days of storm and flooding, and finally the storm abating

with God's promised rainbow shining as the ark found solid ground.



Next, Eileen outlined her final sketch in black permanent marker and with the glass over that pencil drawing traced the outlines onto the glass.

Carefully turning the glass over, the painting of the picture began from the back side. To get just the right colors and proportions, paint was sometimes layered, rubbed off, reapplied until the artist was satisfied that it was just right.



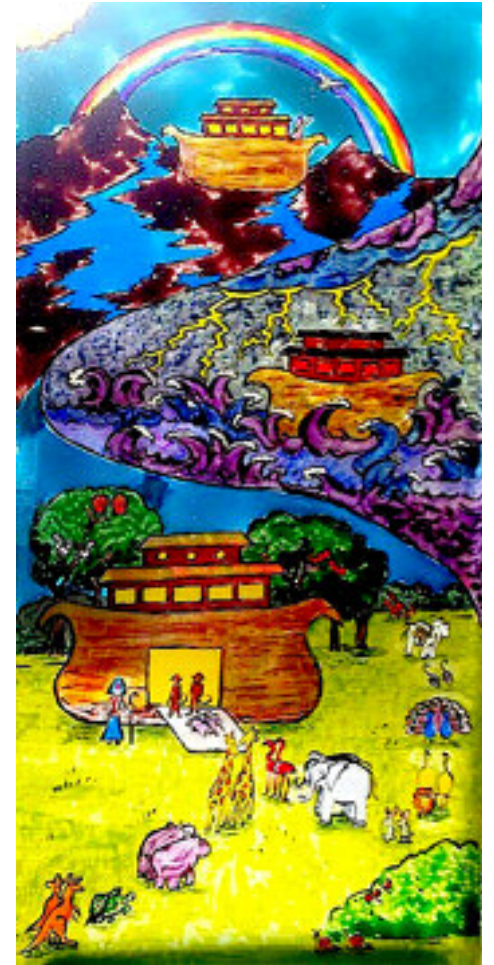
The fun part, Eileen told us, was choosing the animals. She wanted to be sure to include birds, reptiles and insects as well as mammals. She knew there had to be lions, giraffes, hippos, foxes, elephants and even snails, etc. Also, as Eileen and her husband, Ray, have pet turtles, she, of course, wanted them to be represented. The final result is both colorful and fun. Check to see if your favorite animal is lined up for the voyage!



Finally the finished window was taken to be tempered, starting slowly at a low temperature which is gradually increased. This process sets the paint permanently. After careful installation, the unveiling will take place today to add additional beauty to our house of worship.

**Midway Community Covenant Church
22460 24th Avenue South
Des Moines, WA 98038**

“Noah’s Ark” Window



Eileen Miryekta,
artist